

Hydraulic compaction unit
for clay and loam

TFM1



Overview of Features

- Compaction of coarse clay and loam
- Constant material conditions
- Periodic measurement, directly within the process
- Automatic cleaning of the sensor surface

The compaction unit TFM1 is specially designed for the determination of the **residual moisture of clay and loam**. Its hydraulic cylinder gives the compaction unit the power to work successfully for a long, long time.

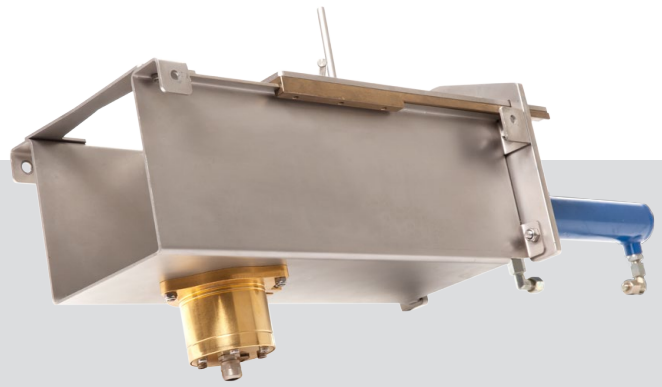
Prior the TFM1 is used after grinder or screen feeder. Thus a partial flow of the falling clay or loam is trapped, compressed and pushed over the ACO moisture measuring sensor. In the end the material just falls out of the TFM1 right back into the production process.

The constant and regular material conditions enable precise measuring results.



Hydraulic compaction unit
for clay and loam

TFM1



Technical Details

Material	Stainless steel Plastic Guiding rail: Brass
Dimensions, over all	Compaction unit: 780 x 250 x 200 (L x W x H in mm) Control unit: 600 x 600 x 330 (H x W x D in mm)
Troughput	ca. 0,4 m ³ /h
Electrical supply	400V AC / 50Hz / 3,0A / 1,5kW
Scope of delivery	<ul style="list-style-type: none"> • Hydraulic compaction unit including cylinder • Steel chains and mounting plate for a hanging installation of compaction unit • Control unit, exist of hydraulic unit (with pump, valves, etc.) and control cabinet, mounted and wired on wall holder • Hydraulic hoses and fittings • 1 proximity switch • Clamp flange for ACO moisture measuring sensor

